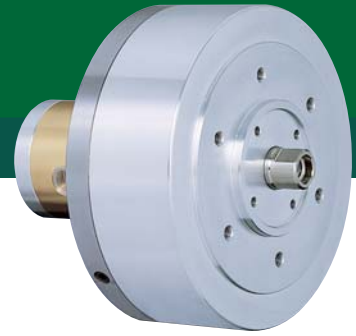


# AY-R 중실형 공압실린더

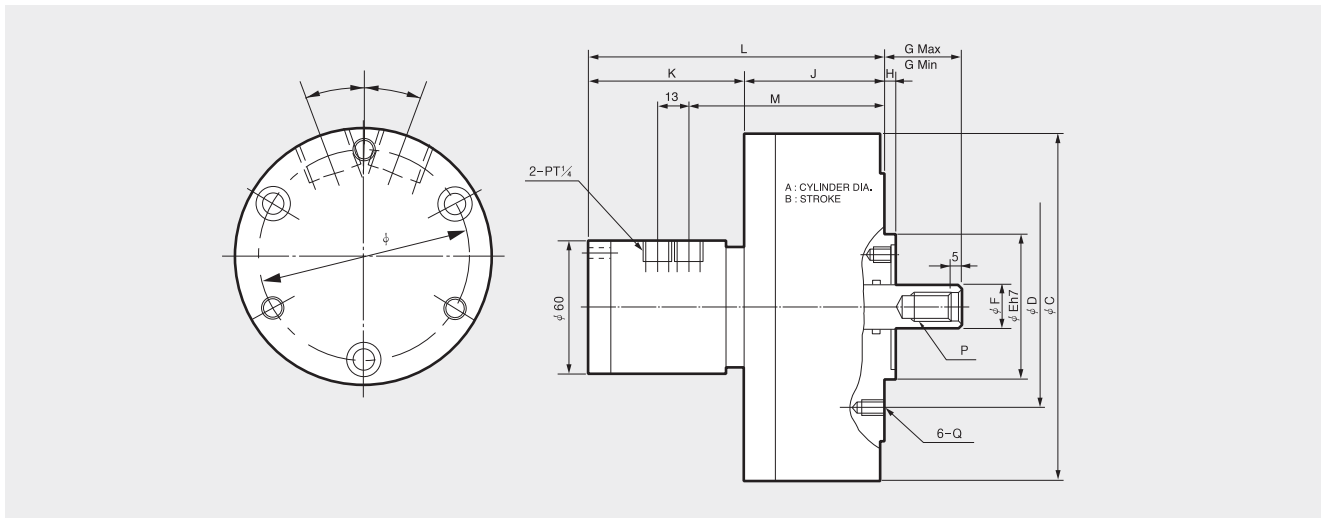
## Closed-Center Pneumatic Cylinder



■ Closed-Centered Pneumatic Cylinder

**PNEUMATIC CYLINDER**

■ 중실형 공압실린더



### Dimensions / 치수표

	A	B	C	D	E (h7)	F	G		H	J	K	L	M	N	Q	P
							max.	min.								
AY-1005R	100	5	128	90	65	20	30	25	5	53	70	123	79	M5	M6×11	M12×22
AY-1315R	130	15	156	90	65	20	35	20	5	63	70	133	89	M5	M6×11	M12×22
AY-1720R	170	20	200	100	80	25	65	45	5	82	70	152	108	M5	M10×16	M16×30
AY-2225R	220	25	255	130	110	30	71	46	5	93	70	163	119	M5	M12×20	M20×35
AY-2730R	270	30	305	130	110	35	76	46	5	103	74.5	177.5	133.5	M5	M12×20	M24×40

### Specifications / 사양

	PISTON STROKE (mm)	Piston Surface Area 피스톤 표면적		Piston force 피스톤 주력		Max. Pneumatic Pressure 최대사용공압력 MPa(kgf/cm <sup>2</sup> )	Max. rpm 허용최고회전수 min <sup>-1</sup> (rpm)	Weight 중량 kgf	GD <sup>2</sup> N·m <sup>2</sup> (kgf·m <sup>2</sup> )
		압축 push cm <sup>2</sup>	인축 pull cm <sup>2</sup>	압축 push kN(kgf)	인축 pull kN(kgf)				
AY-1005R	5	78.5	73.6	552	518	8(0.82)	5000	4.1	0.07
AY-1315R	15	131.0	128.0	786	770	8(0.82)	5000	5.2	0.07
AY-1720R	20	225.0	220.1	1350	1320	8(0.82)	5000	8.3	0.11
AY-2225R	25	378.0	371.1	2268	2226	8(0.82)	4000	13.3	0.25
AY-2730R	30	570.4	560.8	3422	3364	8(0.82)	3000	18.7	0.75

\* Specifications are subject to change without notice.

\* Total leakage pressure: 3.0 Mpa (30.6 kgf/cm<sup>2</sup>) at 50°C.

\* 허용최고 회전속도는 실측치에 준함.

\* PISTON 추력 : 유압력 4.0MPa (40.8kgf/cm<sup>2</sup>)

\* 총Leak량은 유압력 3.0MPa(30.6kgf/cm<sup>2</sup>), 유온 50 ° 일 때