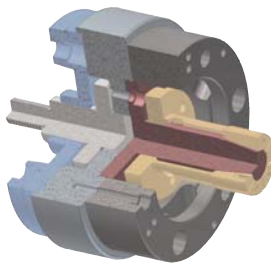


# CDI 내경용 맨드릴 척

## Inside-Clamping Mandrel Chuck

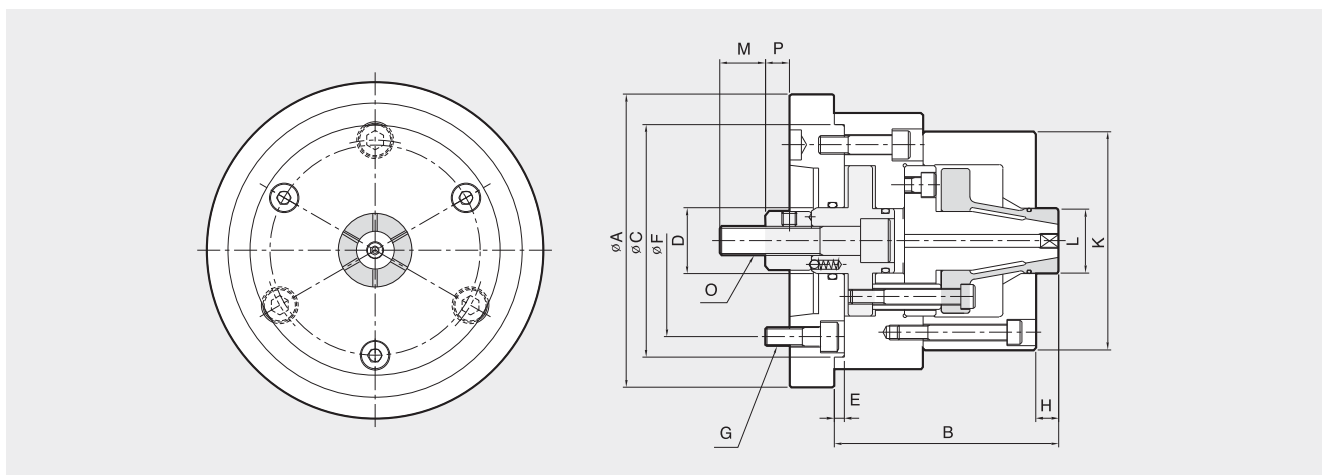


**SPECIAL CHUCK**



- Pulled down to location for accuracy
- Collet changes quickly for machining a variety of work pieces
- Air sensing can be added for automatic loading

- 끌어당겨 고정하여 직각도 동심도 우수
- 빠른 콜릿 교체로 다양한 가공물 가공가능
- 옵션으로 에어센서 장착하여 가공물 자동 장착가능



### Dimensions / 치수표

|        | A   | B   | C(h <sup>*</sup> ) | D  | E | F     | G   | H  | K    | Lmax. | Lmin. | M  | O   | Pmax. | Pmin. |
|--------|-----|-----|--------------------|----|---|-------|-----|----|------|-------|-------|----|-----|-------|-------|
| CDI-06 | 165 | 115 | 150                | 35 | 6 | 104.8 | M10 | 15 | L+25 | 15    | 40    | 40 | M16 | 26    | 23    |
| CDI-08 | 200 | 135 | 170                | 42 | 6 | 133.4 | M12 | 20 | L+35 | 90    | 40    | 45 | M20 | 33    | 29    |
| CDI-10 | 250 | 180 | 230                | 52 | 6 | 171.4 | M16 | 35 | L+40 | 130   | 90    | 55 | M24 | 36    | 32    |
| CDI-12 | 300 | 220 | 230                | 52 | 6 | 171.4 | M16 | 40 | L+50 | 180   | 130   | 55 | M24 | 37    | 32    |

### Specifications / 사양

|        | Clamping Force (kgf) | Max. Drawbar Pull (kgf) | Collet Expansion (mm) | Plunger Stroke (mm) | Chucking Diameter (mm) |     | Max. Speed (r.p.m.) | Weight (kg) | GD <sup>2</sup> (kgf·m <sup>2</sup> ) |
|--------|----------------------|-------------------------|-----------------------|---------------------|------------------------|-----|---------------------|-------------|---------------------------------------|
|        |                      |                         |                       |                     | Max                    | Min |                     |             |                                       |
| CDI-06 | 4000                 | 1500                    | 0.8                   | 3                   | 40                     | 15  | 4500                | 7           | 0.06                                  |
| CDI-08 | 7000                 | 2500                    | 1.0                   | 4                   | 90                     | 40  | 4000                | 14          | 0.19                                  |
| CDI-10 | 12000                | 4000                    | 1.0                   | 4                   | 130                    | 90  | 3300                | 34          | 0.71                                  |
| CDI-12 | 15000                | 4800                    | 1.4                   | 5                   | 180                    | 130 | 2500                | 55          | 2.0                                   |