

CDO 외경용 콜릿 척

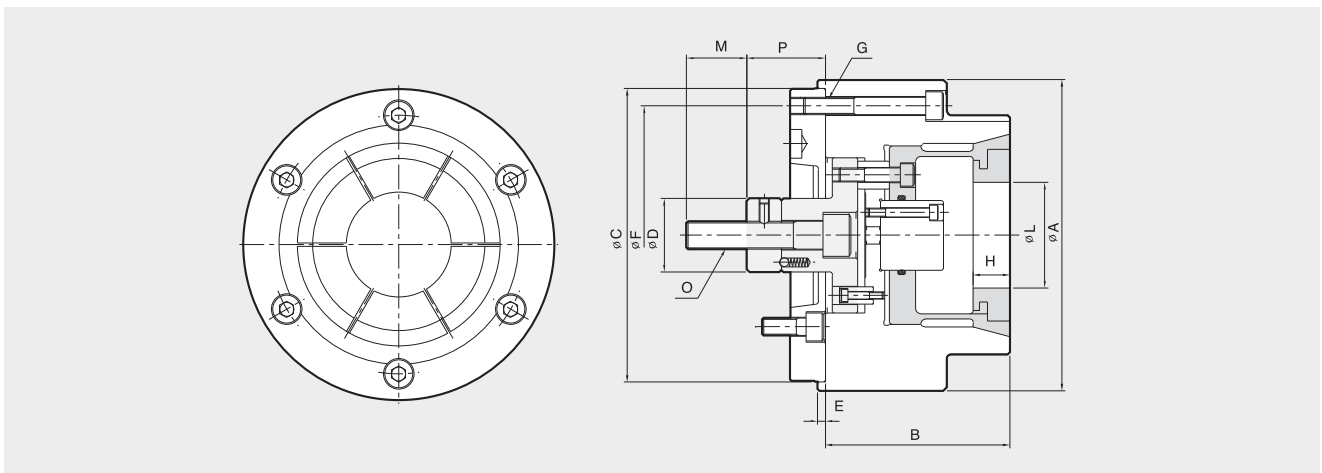
Outside-Collet Chuck



SPECIAL CHUCK

- Interchangeable top jaws grip the workpiece O.D.
- Workpiece is pulled down to location for high accuracy machining
- Air sensing available
- Air / Coolant through the spindle available

- 탑조 교체형의 외경 고정용 기능
- 가공물의 우수한 평행도와 직각도
- 에어 센서 옵션 선택
- 주축 내부 공기 주입기능



Dimensions / 치수표

	A	B	C(h)	D	E	F	G	H	Lmax.	Lmin.	M	O	Pmax.	Pmin.
CDO-06	165	115	150	35	5	130	M12	30	50	15	36	M16	26	23
CDO-08	210	125	200	42	5	180	M12	35	90	80	36	M20	32	29
CDO-10	250	145	230	52	5	210	M16	45	130	80	46	M24	35	32
CDO-12	300	170	230	52	5	270	M16	50	180	100	50	M24	36	32

Specifications / 사양

	Clamping Force (kgf)	Max. Drawbar Pull (kgf)	Collet Expansion (mm)	Plunger Stroke (mm)	Chucking Diameter (mm)		Max. Speed (r.p.m.)	Weight (kg)	GD ² (kgf·m ²)
					Max	Min			
CDO-06	2800	1500	1.6	3	50	15	4500	11	0.11
CDO-08	4600	2500	1.6	3	80	40	4000	23	0.44
CDO-10	6500	3500	1.6	3	130	80	3300	49	1.76
CDO-12	7500	4000	2.0	4	180	100	2500	67	3.10