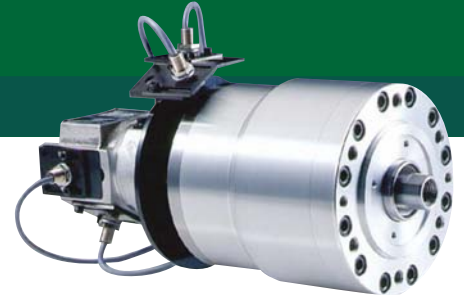


DY

더블 피스톤 회전 실린더

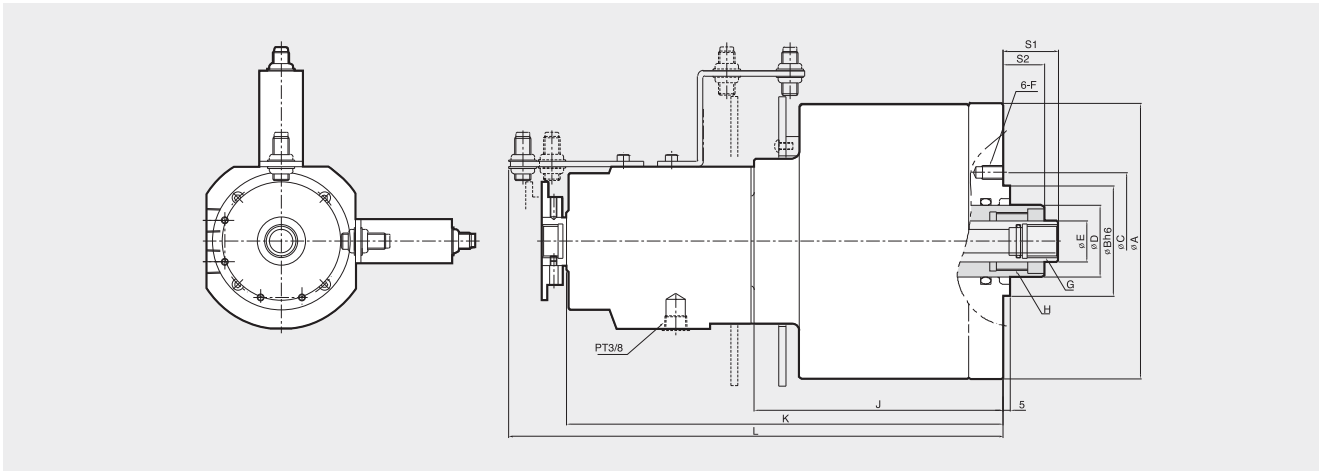
Double-Piston Hydraulic Cylinder



HYDRAULIC CYLINDER

- Double piston cylinder
- Actuate chucks with face drivers or parts ejectors

- 개폐식 죠(이중 작동) 척을 위한 더블 피스톤 실린더
- 이젝터 또는 페이스드라이버가 있는 액츄에이트 척에 적합



Dimensions / 치수표

| | A | B(h ⁶) | C | D | E | F | G | H | J | K | L |
|----------|-----|--------------------|-----|----|----|-------|-------------------------|-------------------------|-----|-----|-----|
| DY-12520 | 160 | 110 | 145 | 50 | 29 | 6-M12 | M20 ^o x 1.5P | M42 ^o x 1.5P | 178 | 299 | 341 |
| DY-16030 | 200 | 80/110 | 100 | 52 | 30 | 6-M10 | M24 ^o x 1.5P | M42 ^o x 1.5P | 181 | 371 | 359 |

Specifications / 사양

| | Piston Dia. 피스톤직경 (mm) | Piston Area 피스톤 단면적 (cm ²) | Piston Stroke | | Max. Operating Pressure 최대사용유압력 (kgf ² /cm) | Max. Speed 허용최고회전수 (r.p.m.) | Weight 중량 (kg) | GD ² (kgf·m ²) |
|----------|---------------------------|---|---------------|-------------|---|--------------------------------|-------------------|--|
| | | | S1(Max/Min) | S2(Max/Min) | | | | |
| DY-12520 | 125/85 | 102/46 | 49/34 | 38/18 | 40.8 | 5000 | 16.5 | 0.045 |
| DY-16030 | 160/85 | 164/46 | 60/45 | 48/18 | 40.8 | 3000 | 24.5 | 0.30 |