

# IAH

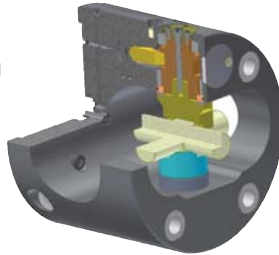
오토 인덱스 척

## Auto-Indexing Chuck

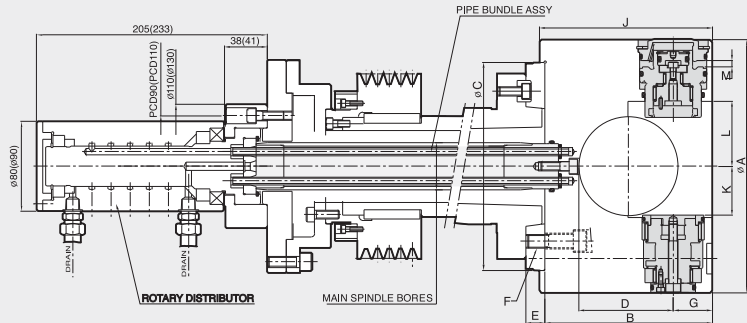
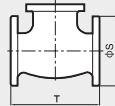
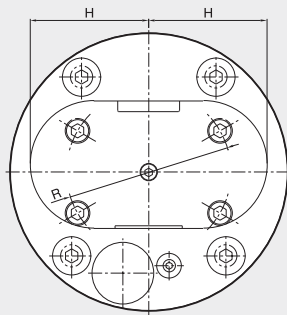


### SPECIAL CHUCK

- Machine multiple surfaces in a single clamping
- On-the-fly indexing
- Accurate, durable indexing system
- Index positions 4x90° or 8x45°



- 1회 고정 후 다양한면 가공가능
- 회전 중에도 각도 분할 기능 가능
- 4 x 90°, 8 x 45° 분할가능, 높은 분할 정밀도 보장



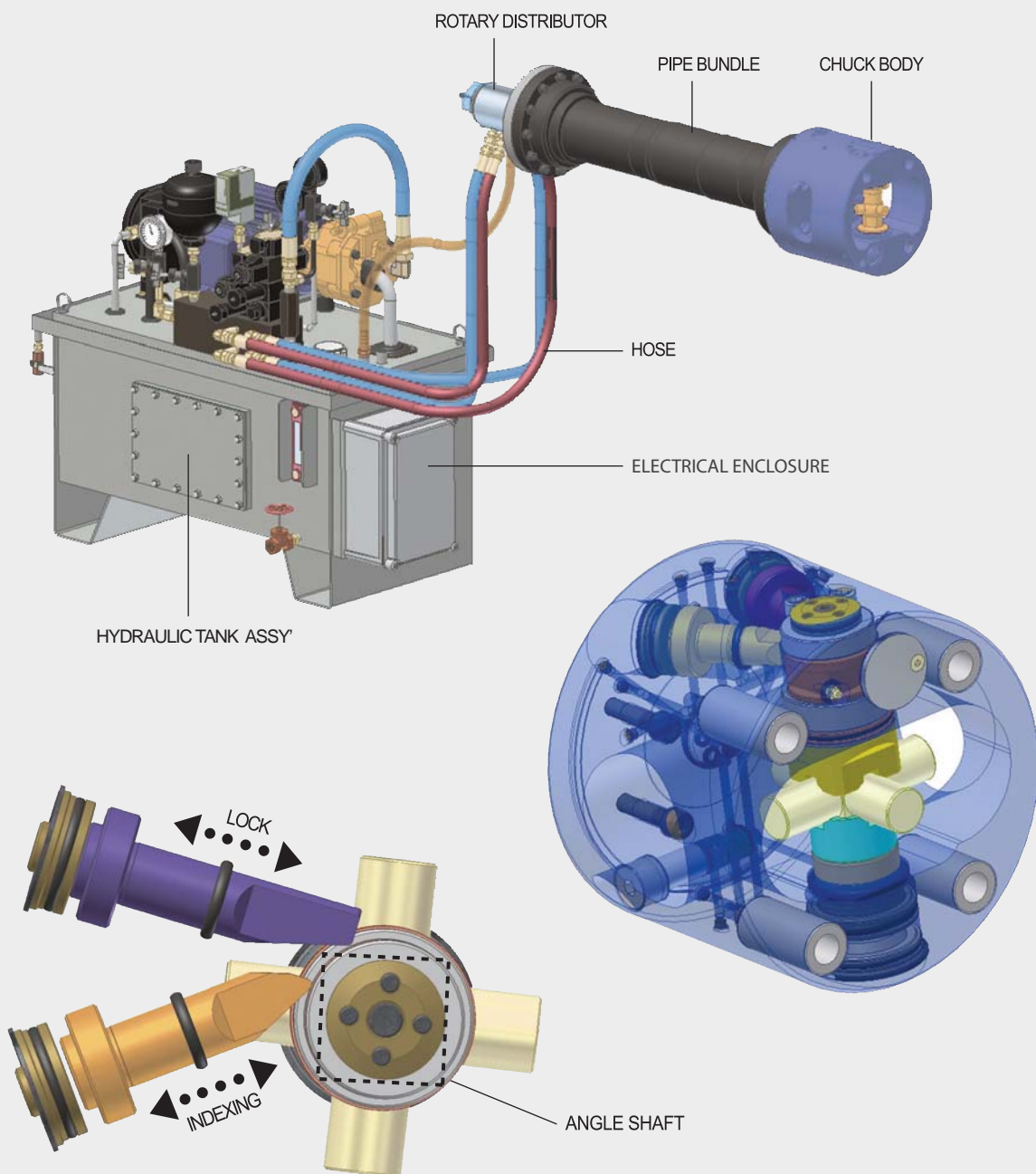
■ bracketed dimensions refer to models IAH-400 and larger.

### Dimensions / 치수표

	A	B	C(h <sup>1</sup> )	D	E	F	G	H	J	K	L	M	R
IAH-225	225	149	185	84	25	M12	35	95	154	46	58	11.5	133.4
IAH-250	250	185	210	113	25	M12	40	106	190	46	55	20	133.4
IAH-275	280	208	210	125	25	M16	48	125	213	57	67	20.5	171.4
IAH-315	315	227	235	136	25	M16	50	136	232	70	85	22	171.4
IAH-350	350	235	290	148	30	M20	50	145	240	84	102	23	235
IAH-400	400	253	290	160	30	M20	60	165	259	100	114	30	235
IAH-500	500	301	380	200	35	M20, M24	68	205	308	133	157	35	235
IAH-670	670	465	380	286	40	M24	90	275	470	176	214	40	330.2

### Specifications / 사양

	Clamping Force (kgf)	Main Spindle Bore (mm)	Max. Speed (r.p.m.)	Weight (kg)	GD <sup>2</sup> (kgf·m <sup>2</sup> )	Max. Workpiece Size φS(mm) T(mm)
IAH-225	1270	OVER 45	2800	29	0.9	60 100
IAH-250	1730		2400	44	1.7	65 160
IAH-280	2550		2000	56	2.8	80 220
IAH-315	2550		1800	75	5.0	100 230
IAH-350	2550	OVER 55	1800	100	8.0	135 240
IAH-400	3530		1200	145	15.0	170 260
IAH-500	4670		900	230	25.4	220 310
IAH-670	5890		600	540	32.5	300 400



## Work Pieces

