

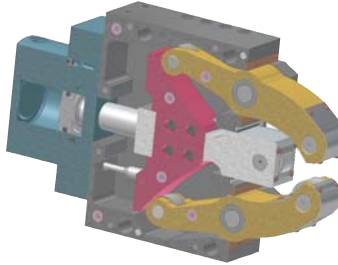
# STA 방진구

## Self-Centering Steady Rest

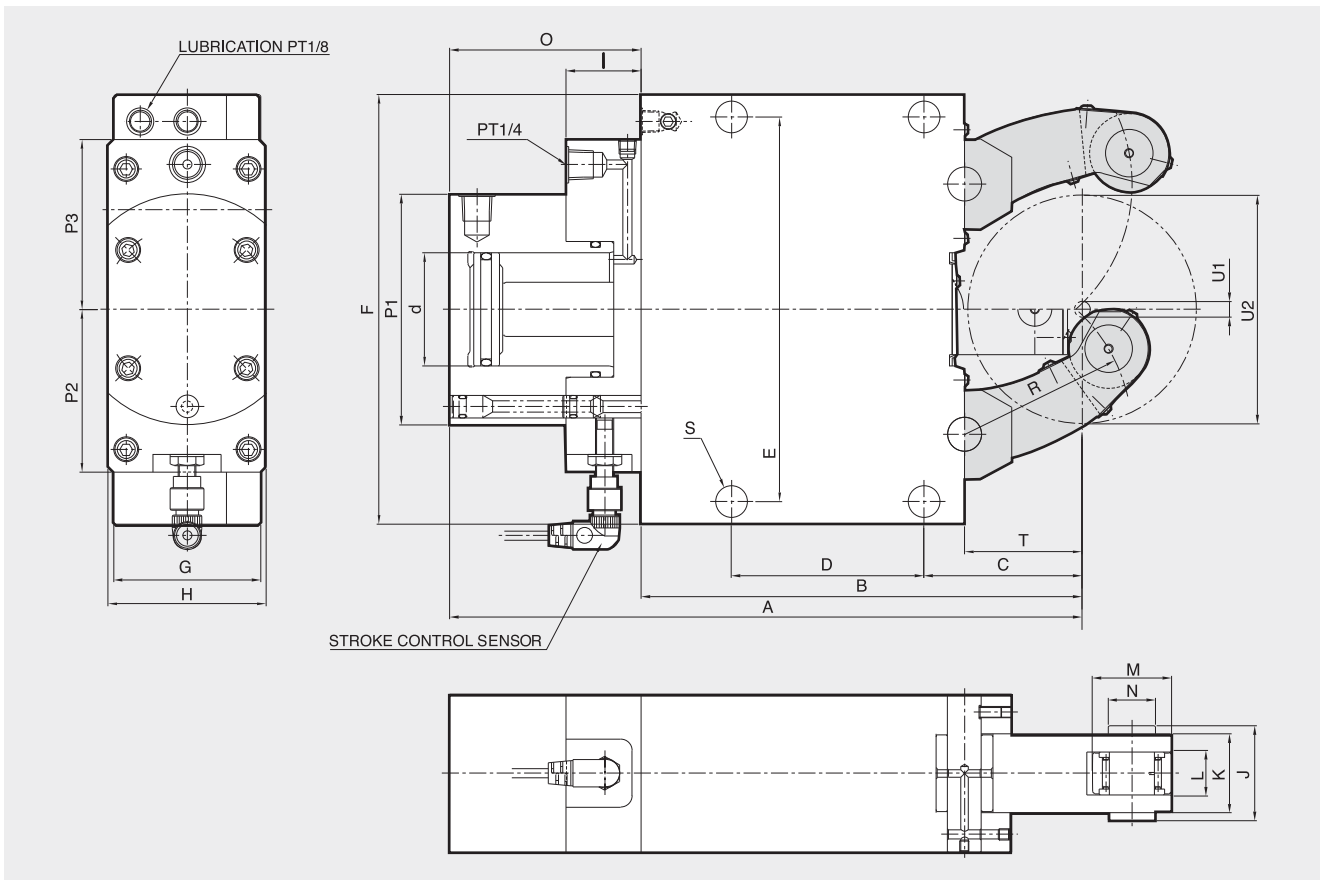


**STEADY REST**

- Improves machining accuracy by supporting unstable, heavy or long workpieces
- The arms and center rollers are interconnected and designed to self-adjust to various size workpieces
- The mechanical design improves durability by eliminating the need for springs



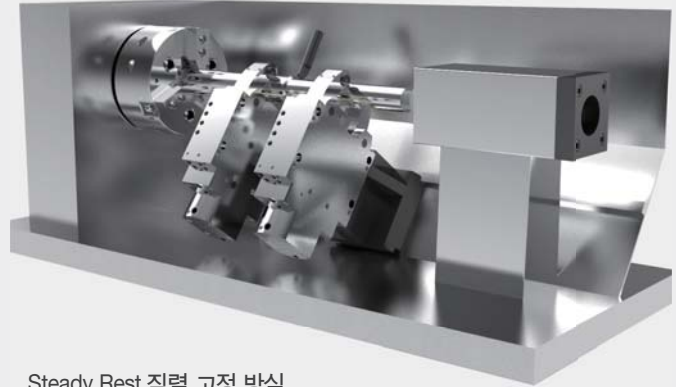
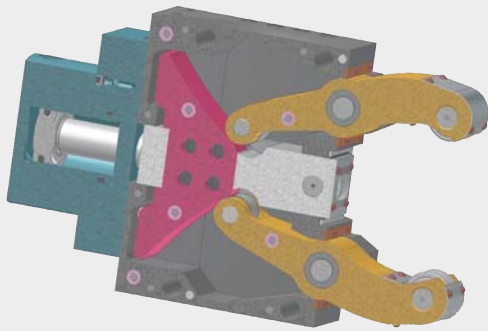
- 샤프트 가공 중 흔들림 보정
- 특수캠 구조, 높은 센터링 정도 및 반복정밀도
- 근접 스위치 설치로 클램프 확인 가능



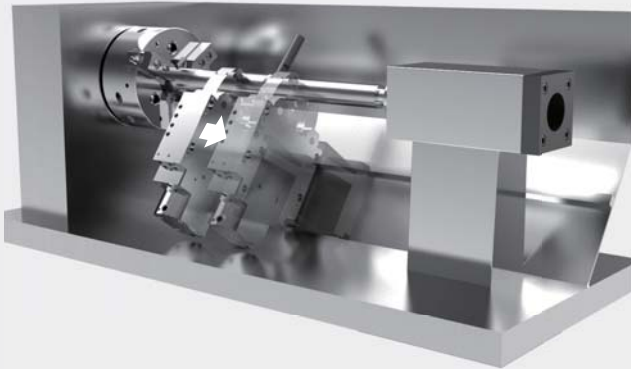
Dimensions / 치수표

	A	B	C	D	E	F	G	H	I	J	K	L	M	N	O	P1	P2	P3	R	S	T
STA-1	207	137	51	64	118	132	55	70	33	24	20	12	19	6	70	84	66	66	50.5	11	37
STA-2	279.5	195	70	85	170	190	70	70	33	42	35	19	35	21	84.5	102	72	75	74	14	52
STA-3	431	312	115	135	262	290	85	100	37	52	45	25	47	25	120	137	90	100	119	18	85
STA-3.1	440	320	123	135	262	290	85	100	37	52	45	25	47	25	120	137	90	100	124	18	93
STA-3.2	455	335	138	135	262	290	85	100	37	52	45	25	47	25	120	137	90	100	139	18	103
STA-4	608	448	146	240	365	400	110	144	37	67	60	25	52	32	160	165	102	110	172	23	128
STA-5	697.5	510	178	270	400	440	145	144	37	83	75	29	62	36	187.5	165	102	110	209	23	160
STA-5.1	717.5	530	198	270	400	440	145	144	37	83	75	29	62	36	187.5	165	102	110	229	23	180
STA-6	944.5	709	215	330	640	680	145	158	37	83	75	29	80	42	235.5	190	115	130	290	27	175

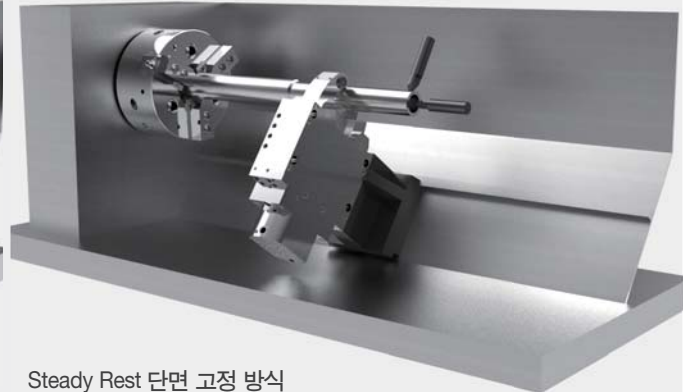
## Fixed or Travelling Applications



Steady Rest 직렬 고정 방식  
Fixed Tandem Steady Rest



Steady Rest 이동 방식  
Travelling Steady Rest



Steady Rest 단면 고정 방식  
Fixed Steady Rest For End Machining

## Specifications / 사양

	Piston Area (cm <sup>2</sup> )	Max. Clamp Force / Roller (kgf)	Operation Pressure Max/Min (bar)	Centering Range (mm)		Max. Roller Roller Surface Speed (m/min)	Centering Accuracy (mm)	Repeatability Accuracy (mm)	Weight (kg)
				Min	Max				
STA-1	7	100	6 / 50	4	64	800	0.02	0.005	6
STA-2	19.6	450	8 / 70	8	101	800	0.02	0.005	14
STA-3	50	1000	8 / 60	12	152	725	0.04	0.007	39
STA-3.1	50	1000	8 / 60	20	165	725	0.04	0.007	40
STA-3.2	50	1000	8 / 60	50	200	725	0.04	0.007	43
STA-4	78	1500	8 / 60	30	245	715	0.05	0.007	92
STA-5	78	2000	8 / 80	45	310	700	0.06	0.01	152
STA-5.1	78	2000	8 / 80	85	350	700	0.06	0.01	155
STA-6	132	3000	8 / 70	125	460	700	0.06	0.01	420